



Known for Reliability Since 1921

The Biro Model AFMG-52-4 (Auto-Feed Mixer-Grinder) is the ideal workhorse for high-volume meat rooms and medium sized processors and HRI plants. Its 10 hp (7.5 kw) motor provides a production output of up to 100 lbs. (45.5 kg) per minute to give you the productivity you need.

The heavy duty roller chain auger drive system with tapered roller bearing journal box is separate from the heavy duty mixing system. This more efficient auger drive design transfers maximum torque power to the auger. The mixing transmission consists of a double reduction gear box and open face gear drive. The heavy duty stainless steel 400 lb. (182 kg) hopper and frame resist corrosion and damage, even in an environment of harsh cleaners. Your mixer grinder lasts longer and gives you more return on your investment. Power, durability, and low maintenance makes the Biro Model AFMG-52-4 (Auto-Feed Mixer-Grinder) a meat room workhorse.



MODEL AFMG-52-4
AUTO-FEED MIXER-GRINDER
(Standard Configuration)

1/8" (3.5 mm)



3/8" (9.0 mm)



AFMG-52-4

MODEL AFMG-52-4 SPECIFICATIONS

Model: AFMG-52-4 Auto-Feed Mixer-Grinder

Construction: Heavy duty stainless steel hopper, lid, paddle, frame and legs. Cast iron hot tin dipped Size 52 bowl, ring and auger.

Motors: TEFC= Totally Enclosed Fan Cooled

| MOTOR | HP | KW | TYPE | VOLTS | AMPS | CYCLE | PH | STATUS |
|-------|----|-----|------|-------------|-------------|-------|----|--------|
| AUGER | 10 | 7.5 | TEFC | 208-230/460 | 31-28/14 | 60 | 3 | STD |
| MIXER | 5 | 3.7 | TEFC | 208-230/460 | 13.4-12/6.3 | 60 | 3 | STD |
| AUGER | 10 | 7.5 | TEFC | 575 | 11 | 60 | 3 | EC |
| MIXER | 5 | 3.7 | TEFC | 575 | 5.5 | 60 | 3 | EC |
| AUGER | 10 | 7.5 | TEFC | 220/380-415 | 28/16.2-14 | 50 | 3 | STD |
| MIXER | 5 | 3.7 | TEFC | 220/380-415 | 19.2/11-10 | 50 | 3 | STD |

EC = Extra Charge NC = No Charge STD = Standard

Switch: Watertight magnetic with thermal overload and under voltage protection.

Power cord: 12' 6 GA - 4 strand cord with 50 amp plug, U.S.,
12' 6 GA - 4 strand cord no plug, International.

Hopper Capacity: Hopper: 400 lbs. (182 kg).

Grinding Capacity: Output – up to 100 lbs. (45.5 kg) per minute.

Drive systems: Auger: Single reduction (35 pitch – 4 row) roller chain drive with tapered roller bearings. See Options (EC) (poly) belt auger drive system. Mixer: Double reduction gear box and open face gear drive.

Safety: Magnetic safety interlock on hopper lid.

Standard Features: Size 52 right hand 35 ° hopper feed inlet (see drawing) • stainless steel mixer paddle with center arms • swivel casters, 6" (152 mm) Dia. w/ side lock • spurt guard • front to back opening lid w/ slow closing gas piston arm • ring wrench • bowl nut wrench • two auger shear pins with screws • Receptacle for electric or pneumatic footswitch • operating and safety manual.

Options(EC): Size 52 plate and knife • single-reduction "Eagle" self-centering, no stretch, no lubrication, poly belt auger drive • electrical or pneumatic footswitch • Size 52 left hand 35 ° hopper feed inlet connections for tandem operations • continuous feed grill lid • stainless steel auger, ring and bowl (Enterprise or Unger Style) • fold up step assembly (see photo). • * Hopper with no right side inlet (NC).

Certification: U.L., N.S.F., U.L.-C

Weight:

Uncrated: 1316 lbs. (597 kg) approx.
Carton packed: 1544 lbs. (700 kg) approx.
Wood crated: 1683 lbs. (763 kg) approx.

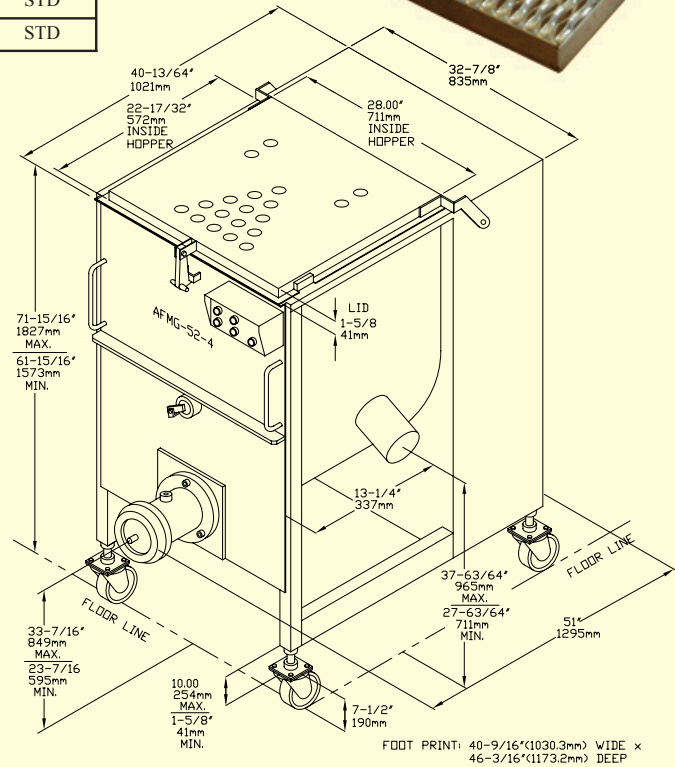
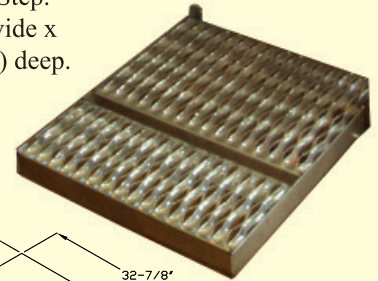
Dims. Crated: L=59" (1498 mm),
W=43" (1092 mm), H=76" (1930 mm)

BIRO MANUFACTURING COMPANY
1114 WEST MAIN STREET
MARBLEHEAD, OH 43440-2099 U.S.A.

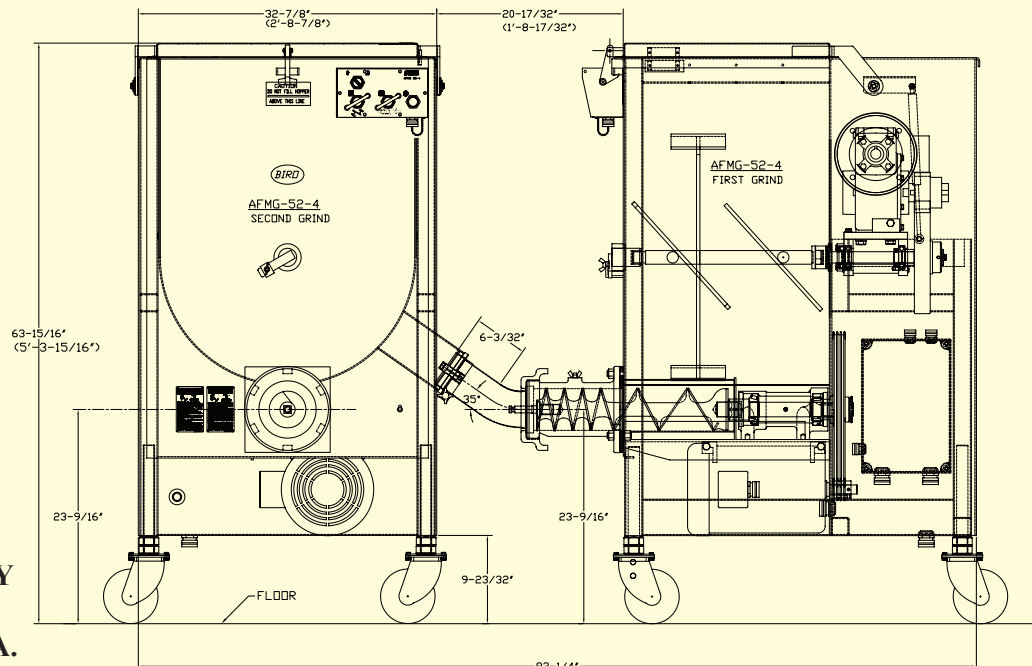
Phone: (419) 798-4451 <http://www.birosaw.com>
Fax: (419) 798-9106 sales@birosaw.com

All specifications contained herein are subject to change without notification.

Optional (EC), Fold-up
Stainless Steel Step.
18" (457 mm) wide x
19-3/4" (502 mm) deep.



Standard Configuration (Step Assembly Not Shown)



AFMG-52-4 to AFMG-52-4 Tandem System

ITEM NO.: LIT-AFMG-52-4-334
FORM NO.: AFMG-52-4-334-6-14-4-B

Service is available from locations worldwide